

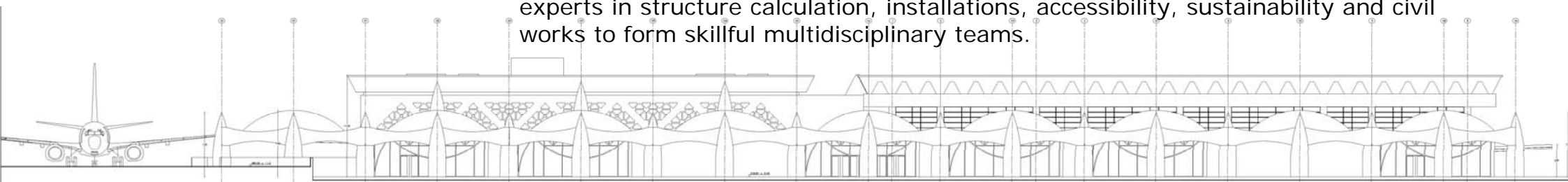




Arica Airport. Reform and Expansion of Terminal Building. Chile.



Kiev Airport. New Terminal Building. Ukraine.



Bamako Airport. Reform and Expansion of Terminal Building. Mali.

ARKITTOOLS is a company dedicated to providing independent architectural and engineering services, both nationally and internationally. The company carries out a wide range of activities that include consulting, integrated design, drafting of construction documents and project management, coordination and construction management.

ARKITTOOLS was set up in 2002 to combine the professional work experience of its founding architects and to provide them with a new work structure, more suitable to the needs of a demanding professional environment.

From the beginning, we have offered a rigorous and personalized service. Working closely with our clients, we analyze their needs thoroughly and offer solutions to meet their expectations. This has always been our main goal and day-to-day challenge. We have extensive experience in various sectors such as infrastructures, urban planning, administrative, industrial, educational, and commercial buildings, sustainable and accessible architecture.., thereby assuring our clients security and total commitment to their objectives while carrying out their projects.

ARKITTOOLS designs, drafts and manages urban planning projects, construction and architectural engineering from the pre-design stage to construction and practical completion, including structures, all kinds of installations and detailed architecture.

In order to provide a better service for our clients, we routinely bring together experts in structure calculation, installations, accessibility, sustainability and civil works to form skillful multidisciplinary teams.



Institute for Advanced Studies of Energy. First Stage. Madrid. Spain.

Some of our clients establish sustainability criteria amongst their goals. Using the client's own methodology or outside certification agencies such as LEED (USGBC), we adopt a series of measures from the initial design process to the overseeing of the construction site.

The ultimate goal is to reduce the environmental impact of buildings as much as possible. Currently, we are completing the construction site of the IMDEA Energy Institute, pre-rated GOLD in the LEED Rating System.

We carefully considered the building envelope according to its function and orientation, looking for energy efficiency. We integrated renewable (solar, photovoltaic, geothermal ...) and combination energy sources (cogeneration) into the project, applying the criteria of bioclimatic architecture to make it resource efficient and minimize energy losses.



Andes Inland Port. City of los Andes. Chile.

Globally, this is how we integrate a network of systems into our projects to carry out control, management and maintenance, etc. of the distinct subsystems and services, centralizing their control and supervision. All of this under the criteria of flexibility and economy, in order to reduce costs and optimize the use of resources.

Regular Collaborators:

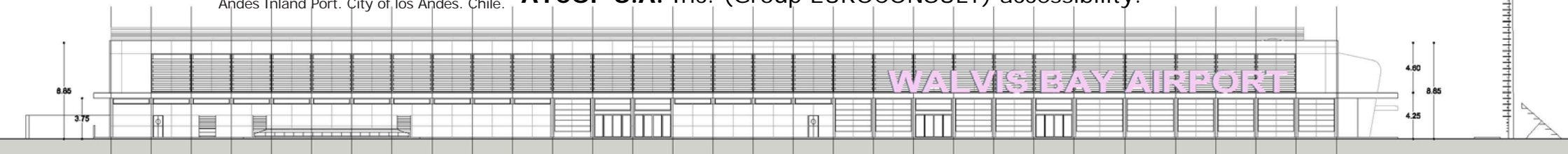
HCA s.l., structures.

Rafael Úrculo, installations.

OFINCO, installations, sustainability.

EUROCONSULT, project supervision, sustainability.

AYCOP S.A. Inc. (Group EUROCONSULT) accessibility.



Walvis Bay Airport. Expansion of Terminal Building. Namibia.



Institute for Advanced Studies of Energy. Second Stage. Madrid. Spain.



Library, Rey Juan Carlos University. Alcorcón. Madrid. Spain.

CLIENTS:

The AENA Group Airport Management and Air Navigation Services.
INECO, Transport Engineering Company, Ministry of Public Works.
IMDEA, MADRID INSTITUTE FOR ADVANCED STUDIES.
EMVS GOVERNMENT DEPARTMENT OF PLANNING AND HOUSING.
MINISTRY OF EDUCATION, SCIENCE AND TECHNOLOGY.
UNIVERSITY CARLOS III MADRID
UNIVERSITY REY JUAN-CARLOS
UNIVERSITY OF SALAMANCA
TRAGSATEC S.A
GENERAL SERVICES SGS ITV
URBAN TECHNOLOGY CONSORTIUM MÓSTOLES.
CÁCERES CHAMBER OF COMMERCE
EPTISA
LV-SALAMANCA ENGINEERS
INOCSA
CORPORATE ENTITY FERCOPOR
COMPANY PAKAR
KONLI, S.A
LAIN SA CONSTRUCTION GROUP OHL
OHL CONSTRUCTION GROUP HUARTE
ENTRECANALES
TECONSA, CONSTRUCTION TECHNOLOGY, S.A
ING REAL ESTATE



Almería Airport. New Terminal Building. Spain.



Social Science Campus. Salamanca University. Spain.

DESIGN COMPETITIONS/AWARDS.

IMDEA, MADRID INSTITUTE FOR ADVANCED STUDIES BUILDING, TENDERED BY THE URBAN TECHNOLOGY CONSORTIUM MÓSTOLES.

LANZAROTE AIRPORT, REFORM AND EXPANSION OF TERMINAL BUILDING (EPTISA), TENDERED BY AENA, WINNING PROJECT.

SAN SEBASTIAN AIRPORT, REFORM AND EXPANSION OF TERMINAL BUILDING (EPTISA) TENDERED BY AENA, WINNING PROJECT.

ALMERIA AIRPORT, NEW TERMINAL BUILDING (EPTISA) TENDERED BY AENA, WINNING PROJECT.

ALCORCÓN CAMPUS LIBRARY, TENDERED BY REY JUAN CARLOS UNIVERSITY MADRID, WINNING PROJECT.

ALCORCÓN CAMPUS, DEPARTMENTAL AND LABORATORIES BUILDING, TENDERED BY REY JUAN CARLOS UNIVERSITY MADRID, PROJECT WINNER.

SOCIAL SCIENCE CAMPUS, LEGAL AND BUSINESS DEPARTMENT, TENDERED BY SALAMANCA UNIVERSITY, DRAFT WINNER.

ARGANDA DEL REY SPORTS CENTRE, TENDERED BY MADRID SPORTS BOARD AND ARCHITECTS ASSOCIATION OF MADRID, HONOURABLE MENTION.



